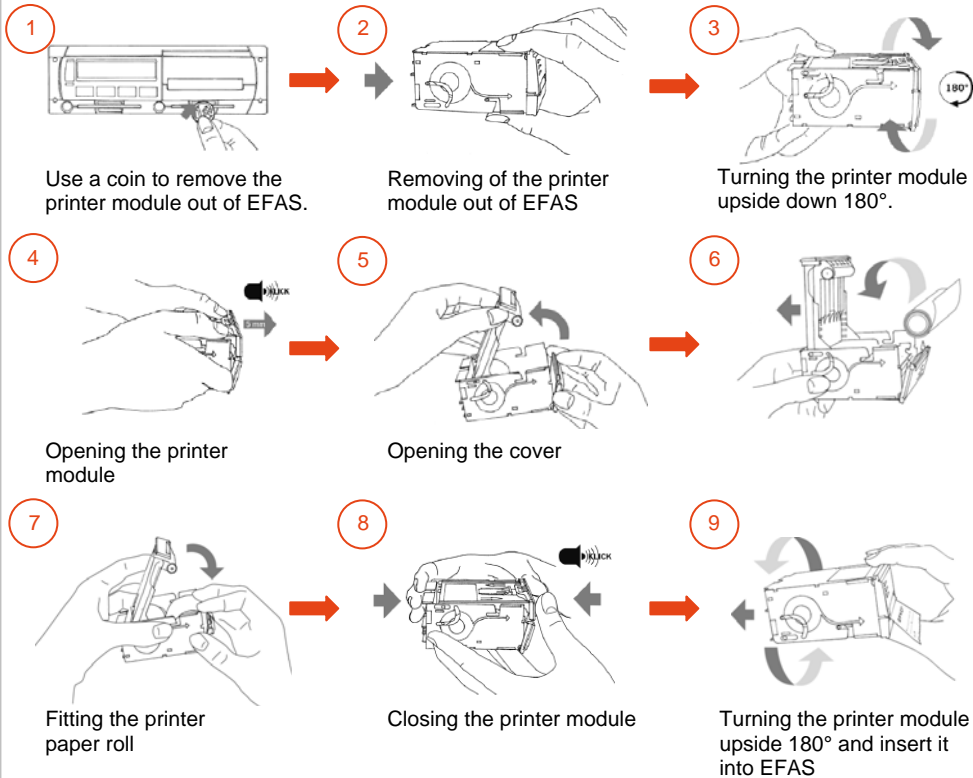


How to replace a printer module in a few steps



Use a coin to remove the printer module out of EFAS.

Removing of the printer module out of EFAS

Turning the printer module upside down 180°.

Opening the printer module

Opening the cover

Fitting the printer paper roll

Closing the printer module

Turning the printer module upside 180° and insert it into EFAS

How to read a print of EFAS

EFKON	
▼ 26.02.2009 11:29 (UTC)	
24h	
□ TESTFAHRER_0088	
TIMO	
□ UK /DR24220FL0088	
A 1234567890ABCDEF	
D /B-EF401	
□ EFKON AG	
EP000218	
T TESTWERKSTATT_0020	
T UK / 0 4 2 F 0 2	
T 12.12.2008	
□	

Start of printout

Date of printing/time in UTC

Start of section: type of printout

Type: driver activities from card

Start of section: driver data (with driver card inserted)

Surname and first name of cardholder

Card ID of cardholder

Start of section: vehicle identification

Vehicle identification number

Country where the vehicle is registered/licence plate number

Start of section: control unit ID

Name of control unit manufacturer & Part number of EFAS

Start of section: last calibration of control unit

Name of workshop that performed calibration

Workshop card ID & Date of last calibration

Start of section: last inspection (by a controller)

Printouts available for:

- Daily activities
- Events and errors
- Technical data/ Speeding
- Status changes etc.

This document is a quickstart. Download of complete user guide at: www.intellic.eu/downloads

INTELLIC
an EFKON company

EFAS

The next generation of digital tachograph



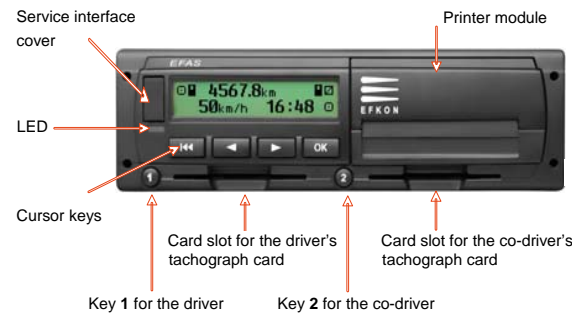
EFAS – THE DIGITAL TACHOGRAPH

Cost Reduction – Time Efficiency – RDD Ready – User Friendliness

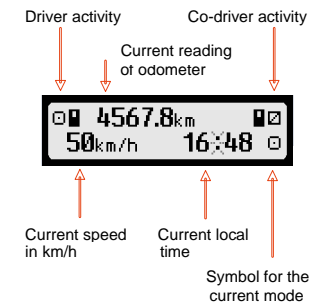
The digital tachograph EFAS introduces the next generation of digital tachographs and sets new technical standards.

How to read a print of EFAS

Control elements of EFAS



Display of EFAS



SERVICE INTERFACE: a front mounted interface for calibration and downloading data

RED LED LAMP: warning alerts, when blinking, as options (acoustical alerts can also be programmed, as options)

Manual entries

EFAS is operated by means of 4 cursor keys:



In Stop: within a menu a selected function is broken off and/or a menu level decreases.
By driving: storage of the current speed for optional speed monitoring.



Cursor key ← previous entry



Cursor key → next entry



Confirmation of the information displayed.
In stop: confirmation + calling of the main menu.

Company lock:

The company is responsible for making Company lock, using company card (yellow), before using vehicle.

Driver card:

At least **every 28 days**, data must be downloaded from the driver smartcard and archived. The driver smartcard identifies the driver to the device and stores all driver-related data.



Note: The driver is responsible that all activities of a working day have to be recorded on his driver card. If the driver has performed activities while his driver card was not inserted, he has to complete all manual inputs after the event.

Mass memory:

At least, **every three months** data must be downloaded from the internal memory and archived. The mass memory unit stores all vehicle-related data, as well as driver data.

Persons	Measures	Mode of operation	Activity
Company		Company mode	Driving
Controlling bodies	Control	Control mode	Availability
Driver	Driving	Work mode	Rest period
Workshop	Inspection/Calibration	Calibration mode	Work period
Manufacturer	Device must be activated with workshop card	Device not activated	

Device/ Functions	Driving
1 Driver slot	Driving time
2 Co-driver slot	Driving time in one week
Card	Driving time in two weeks
	Daily driving time

How to make manual entries in a few steps

1 Start driving – No manual inputs

Insert your driver card. The EFAS displays automatically:

- Turn on the ignition and insert your driver card in the left-hand-slot.
- Your name will be displayed and the read option is continued.
- The display shows the date and the time (UTC) of your last card withdrawal.
- Select YES or NO by pressing **←** or **→** and confirm with OK.
- Use the cursor keys **←** or **→** select the country where the journey begins and press OK.
- The card insertion procedure is completed when the corresponding card symbol stops flashing.
- The entries are now complete. You are ready to go.

2 Complete activities

Make your entries for Login as described in Example 1:

- **→ see start driving**
- Select YES with the cursor **←** or **→** and confirm with OK.
- Select NO by pressing **←** or **→** if you want to change end of previous work and confirm with OK.
- You can change the activity by pressing cursor **←** or **→** and confirm with OK.
- Use **←** or **→** to select the UTC when you stopped this activity, if necessary and confirm with OK.

2 Complete activities

Make your entries as described in Example 1:

- The display shows the date and the time of the end of your last activity. Confirm the activities by pressing OK.
- Select YES with the cursor **←** or **→** and confirm with OK. The data is written on the card.
- Use the cursor keys **←** or **→** to select YES and press OK.
- Use the cursor keys **←** or **→** to select the country and confirm your choice of land by pressing OK.

Now, the trip can be continued or terminated.

For detailed representations of all settings on the digital tachograph EFAS, please use our user guide.

3 Stopping & Withdrawing the driver

Make your entries as described in Example 1:

To terminate the journey, please obey the following steps:

- Park your vehicle. Leave the ignition on.
- Press key 1 for longer than 1.5 seconds
- The display shows the following setting:

- Use the cursor keys **←** or **→** to select the country and confirm your choice of land by pressing OK.
- If you require a daily printout, use the cursor keys **←** or **→** to select YES and press OK.
- In case of two drivers you can choose driver 1 or 2 by using the cursor keys **←** or **→** and confirm with OK.

The list of drivers activities will then be printed. You can withdraw your

Attention: Withdraw your driver card from the digital tachograph EFAS until when ending your journey or when interrupting for a longer time. Withdrawing of your driver card is only possible when the vehicle is parking. Leave the ignition on.